

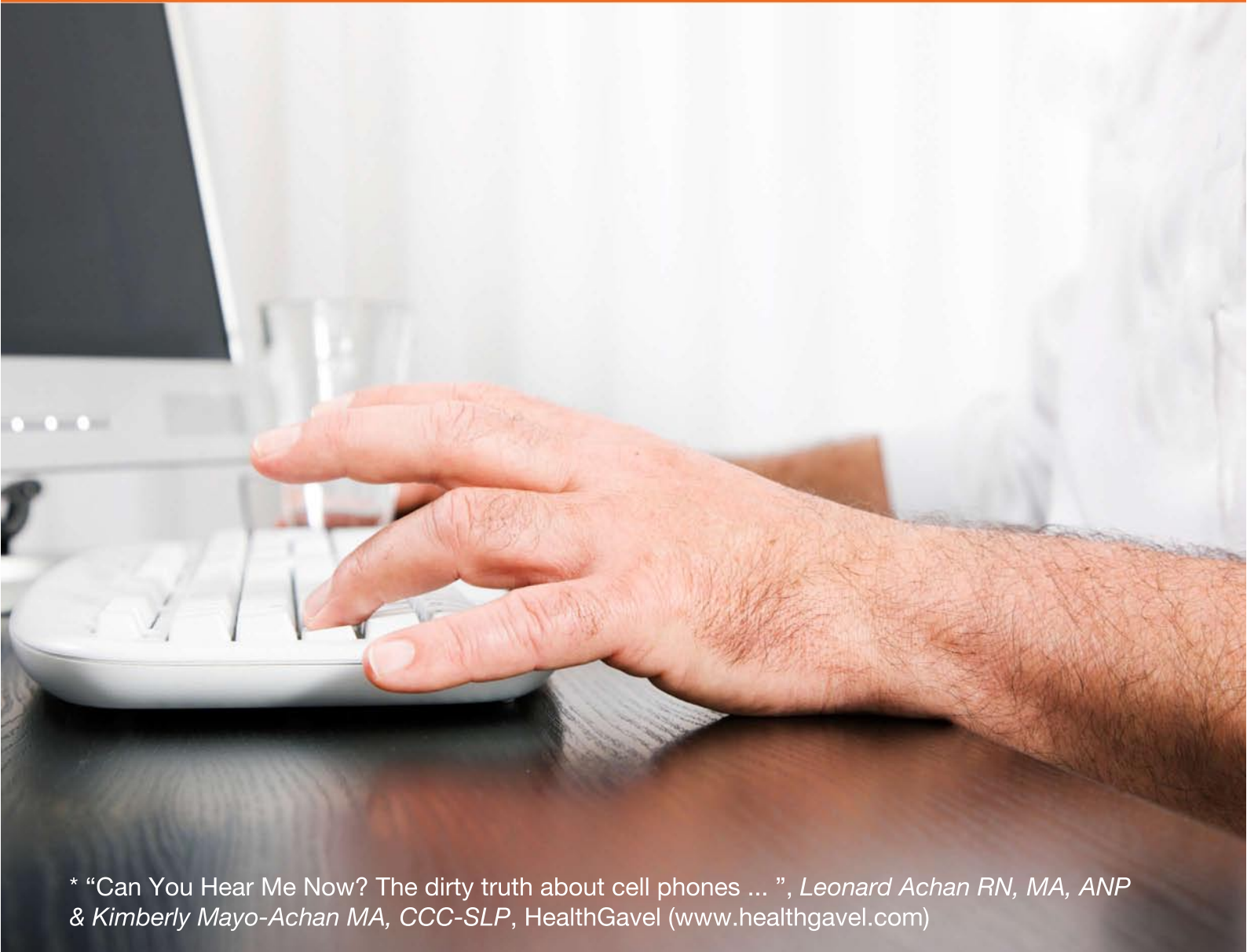


Feidhmeannacht na Seirbhíse Sláinte
Health Service Executive

A Partnership for
Better Healthcare



**3,300 GERMS per sq. inch
LIVE ON YOUR KEYBOARD***



* "Can You Hear Me Now? The dirty truth about cell phones ... ", Leonard Achan RN, MA, ANP & Kimberly Mayo-Achan MA, CCC-SLP, HealthGavel (www.healthgavel.com)

HOW MANY LIVE ON YOUR HANDS?



Feidhmeannacht na Seirbhíse Sláinte
Health Service Executive

A Partnership for
Better Healthcare



**25,000 GERMS per sq. inch
live on your MOBILE PHONE***



* "Can You Hear Me Now? The dirty truth about cell phones ... ", Leonard Achan RN, MA, ANP & Kimberly Mayo-Achan MA, CCC-SLP, HealthGavel (www.healthgavel.com)

HOW MANY LIVE ON YOUR HANDS?



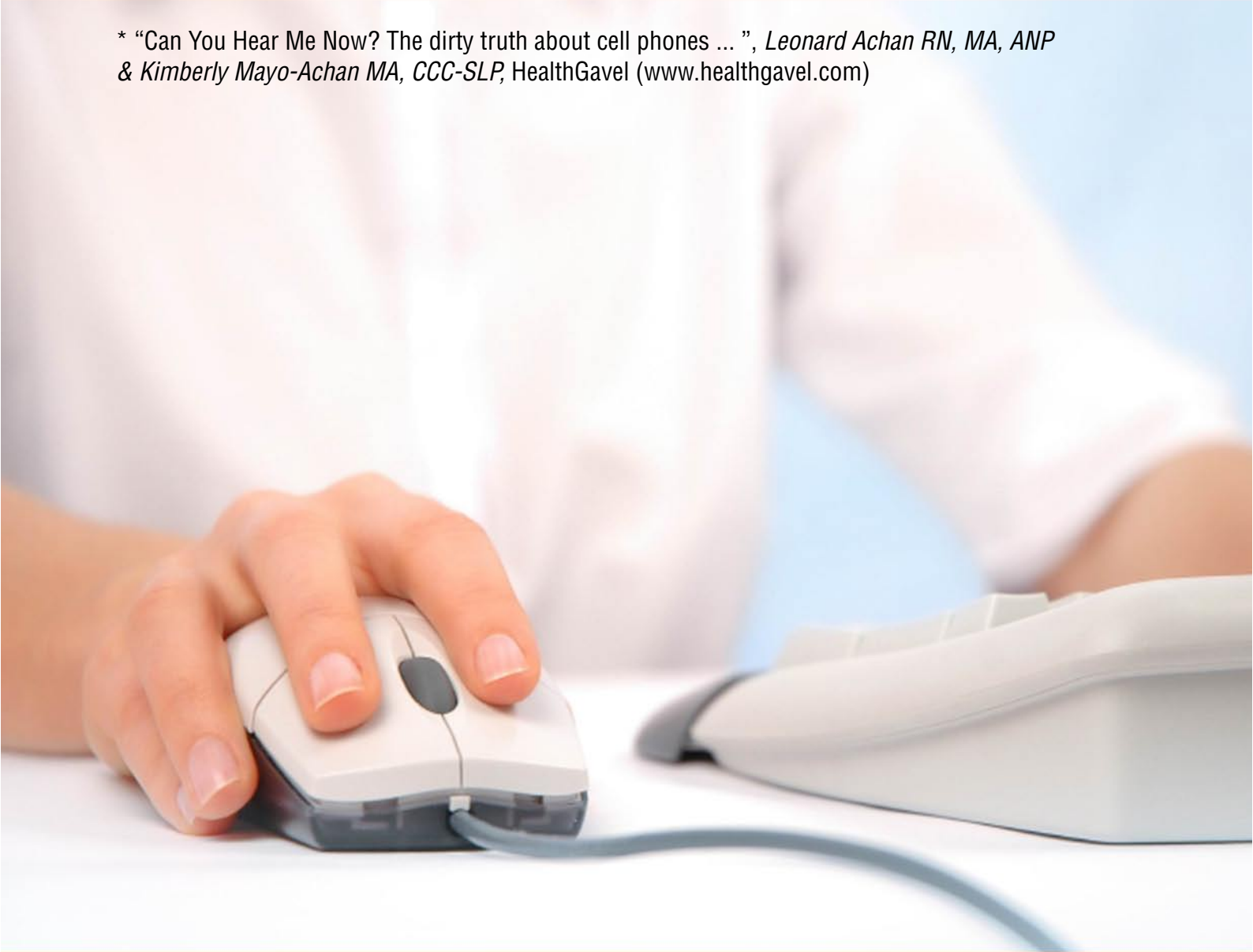
Feidhmeannacht na Seirbhíse Sláinte
Health Service Executive

A Partnership for
Better Healthcare



1,700 GERMS per sq. inch live on your MOUSE*

* "Can You Hear Me Now? The dirty truth about cell phones ...", *Leonard Achan RN, MA, ANP*
& *Kimberly Mayo-Achan MA, CCC-SLP*, HealthGavel (www.healthgavel.com)



HOW MANY LIVE ON YOUR HANDS?

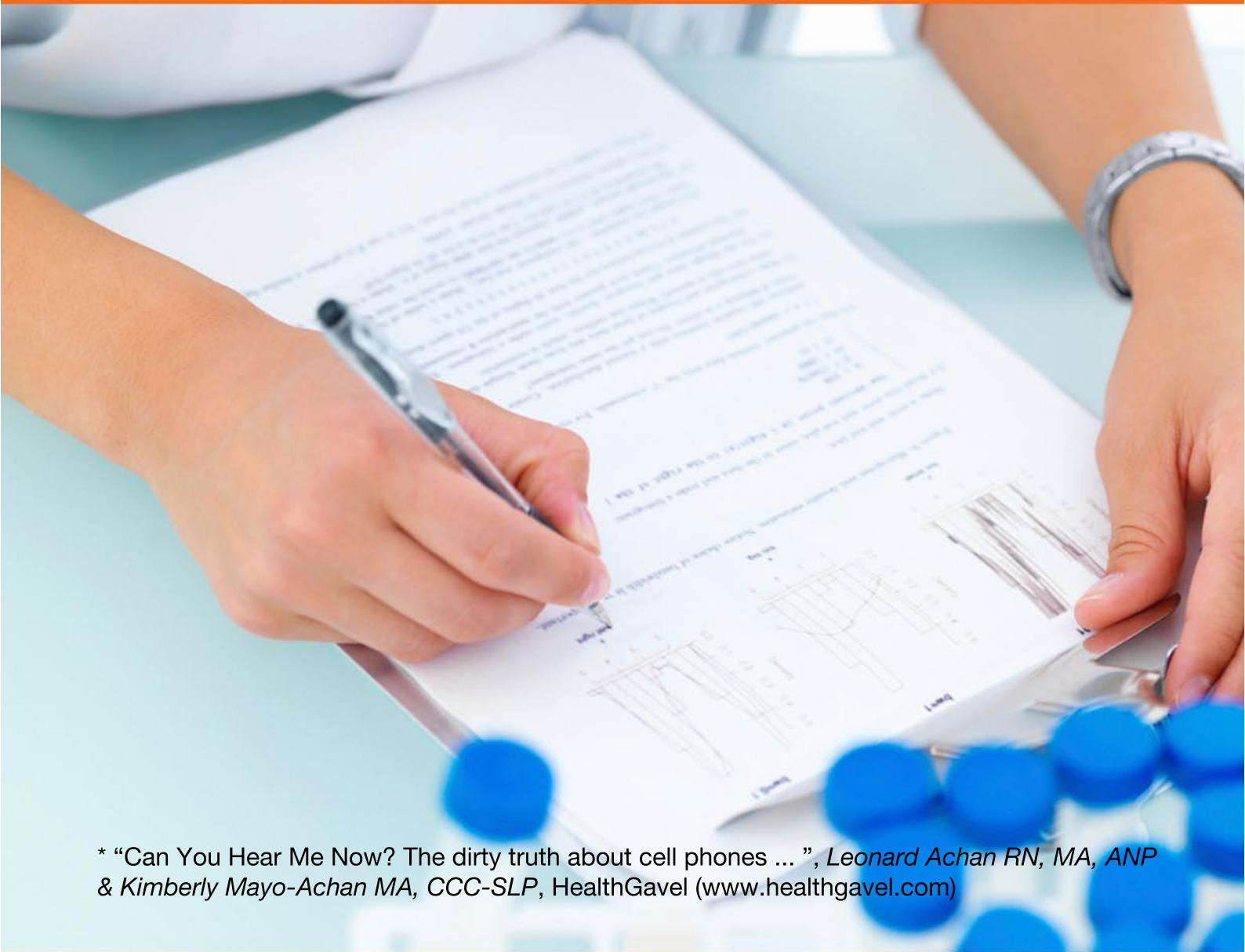


Feidhmeannacht na Seirbhíse Sláinte
Health Service Executive

A Partnership for
Better Healthcare



21,000 GERMS per sq. inch live on your DESKTOP*



* "Can You Hear Me Now? The dirty truth about cell phones ...", Leonard Achan RN, MA, ANP & Kimberly Mayo-Achan MA, CCC-SLP, HealthGavel (www.healthgavel.com)

HOW MANY LIVE ON YOUR HANDS?